



GAT MONTHLY MEMBERSHIP PROGRESS REPORT

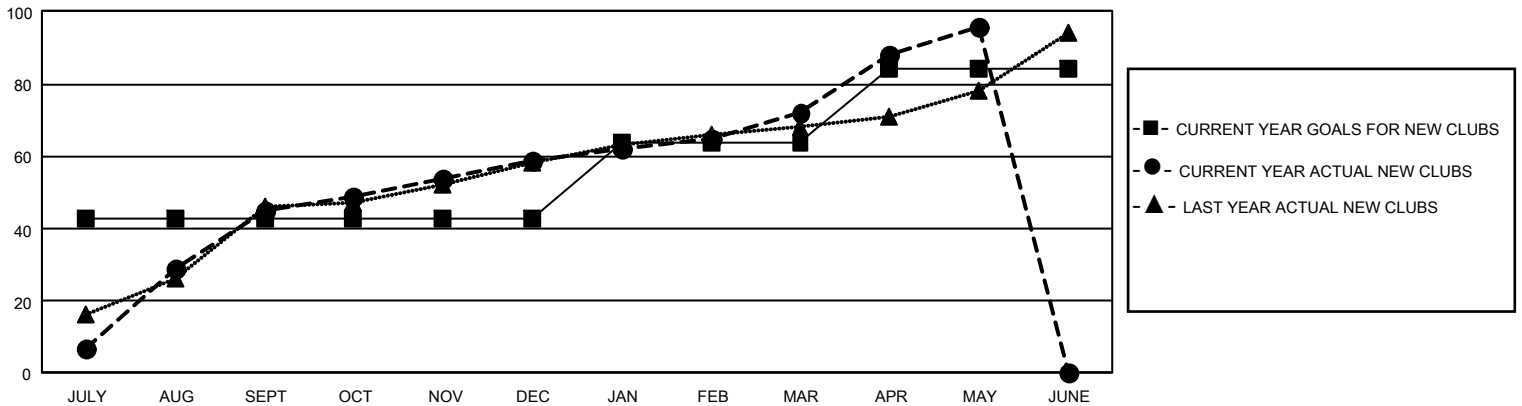
Results as of: 5/31/2025

GMT Constitutional Area 6 - I, Group F

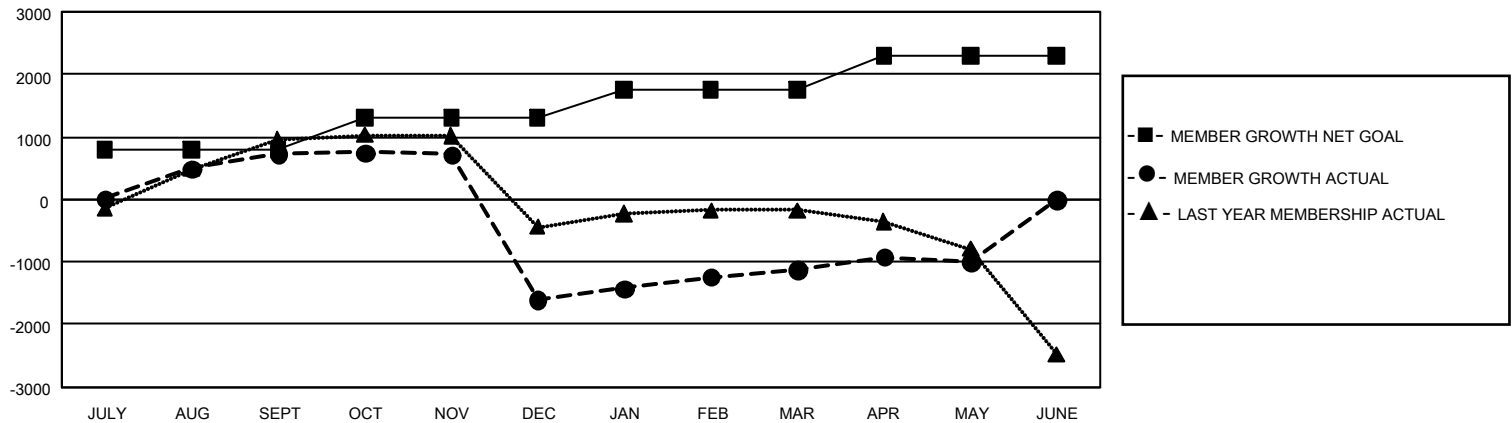
REPORT DOES NOT INCLUDE CLUBS IN UNDISTRICTED AREAS.

Clubs				Members			
RESULTS FOR 2024-2025				RESULTS FOR 2024-2025			
QUARTER	NEW CLUB GOAL	NEW CLUBS	DROPPED CLUBS	QUARTER	MEMBER GROWTH NET GOAL	MEMBER GROWTH ACTUAL	DROPPED MEMBERS ACTUAL (including transfers)
JULY/AUG/SEPT	129	45	12	JULY/AUG/SEPT	790	2,017	1,034
OCT/NOV/DEC	0	14	108	OCT/NOV/DEC	515	1,083	3,324
JAN/FEB/MAR	63	13	15	JAN/FEB/MAR	442	1,431	554
APR/MAY/JUNE	60	24	0	APR/MAY/JUNE	545	1,598	998

GOALS AND ACTUAL NEW CLUBS CUMULATIVE



GOALS AND ACTUAL MEMBERS CUMULATIVE



DROPPED CLUBS: 135

612 CLUBS OF 1,274 ADDED 1 OR MORE NEW MEMBERS

GENDER DISTRIBUTION

MALE	21,953 (73.42%)
FEMALE	7,938 (26.55%)
NON BINARY	0 (0.00%)
PREFER NOT TO ANSWER	10 (0.03%)

DROPPED MEMBERS

DECEASED	93
CLUB CANCELLED	2,037
OTHER	3,761
TOTAL	5,891

[CLICK HERE FOR CUMULATIVE MEMBERSHIP DATA](#)

TOTAL FAMILY UNIT MEMBERS 11,413

FAMILY MEMBERS PAYING HALF DUES 6,799